

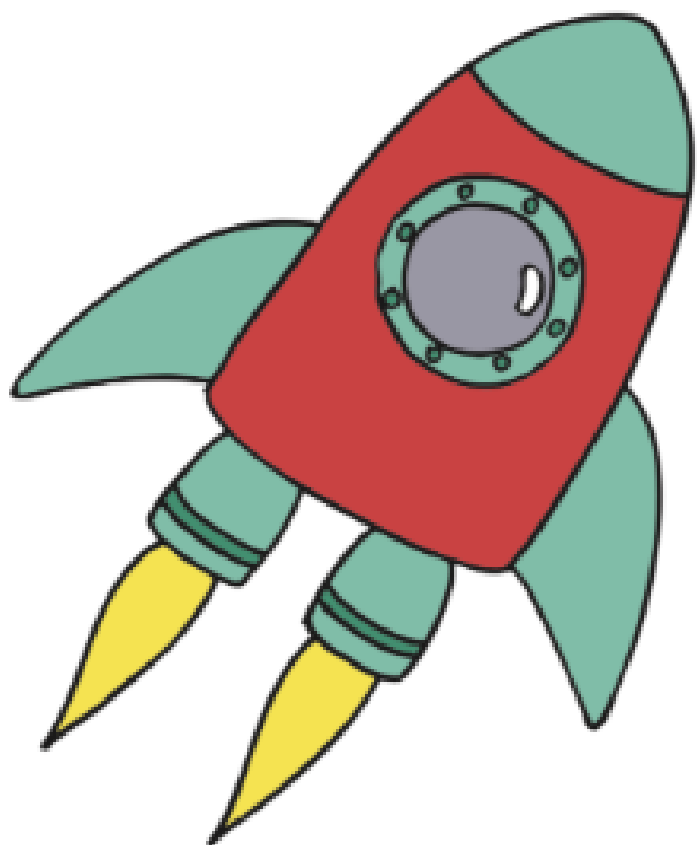
Changes to our heart ward and clinic spaces

Later this spring, Evelina London will be opening a new children's heart ward and a new space for outpatient clinic appointments for children with heart conditions.

The new areas - Edward ward and Galaxy outpatients - will be bright and child-friendly and have everything you need. Young heart patients, families and staff have helped design them.

When your child has an upcoming appointment, procedure or test, your booking letters will include clear information about where to go.

Visit evelinalondon.nhs.uk/HeartServiceChanges or scan the QR code to find out more:



If you have any questions, speak to your clinical team

